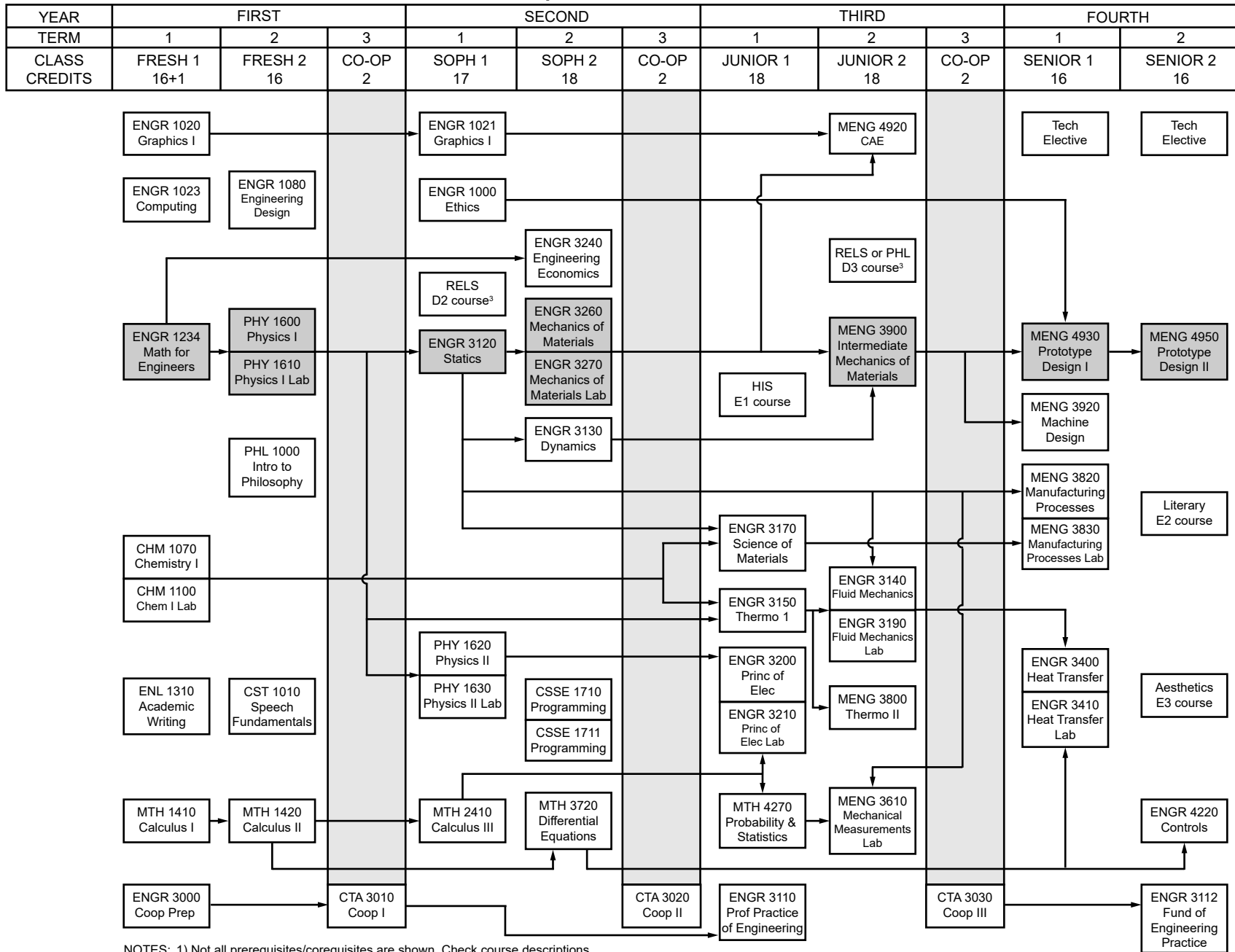


Detroit Mercy Bachelor of Mechanical Engineering Course Requirements Flowchart Effective Fall 2017



NOTES: 1) Not all prerequisites/corequisites are shown. Check course descriptions.

2) Gray boxes indicate the Mechanical Design Critical Path. Most of these courses require a "C" grade in prerequisite classes.

3) One D2 or D3 course must also fulfill Knowledge Area IT4.

Rev: 07/13/2017